




721

721

MODELLI MODELS	MOMENTO LIFTING MOMENT	SBRACCIO ORIZ. HORIZ. HYDRAULIC OUTREACH	PORTATA AL DISTRIBUTORE OIL FLOW TO THE CONTROL VALVE	SBRACCIO MAX VERTICALE MAX VERTICAL REACH	PESO WEIGHT	PRESSIONE PRESSURE	INTERASSE STAB. STANDARD APERTI DISTANCE BETWEEN CENTRES WITH OPENED OUTRIGGERS	INTERASSE STAB. EXTRA APERTI EXTRA WIDE DISTANCE BETWEEN CENTRES WITH OPENED OUTRIGGERS
	Tm.	m.	l.min	m.	Kg	bar	mm.	mm.
721 A1	19.2	6.40	35	10.0	2450	300	5000	5990
721 A2	18.9	8.31	35	11.9	2600	300	5000	5990
721 A3	18.4	10.29	35	13.8	2750	300	5000	5990
721 A4	17.9	12.22	35	15.8	2865	300	5000	5990
721 A5	17.4	14.31	35	17.8	3010	300	5000	5990
721 A6	17.0	16.40	35	19.9	3110	300	5000	5990
721 A7	16.5	18.50	35	22.0	3225	300	5000	5990
721 A8	16.2	20.60	35	24.1	3310	300	5000	5990
721 A4J3	/	20.40	35	23.9	3410	300	5000	5990
721 A6J2	/	21.95	35	25.4	3460	300	5000	5990

Autocarro consigliato - Recommended truck - Camion conseillé - Camion aconsejado
M.T.T. ton 19 - G.V.W. ton 19

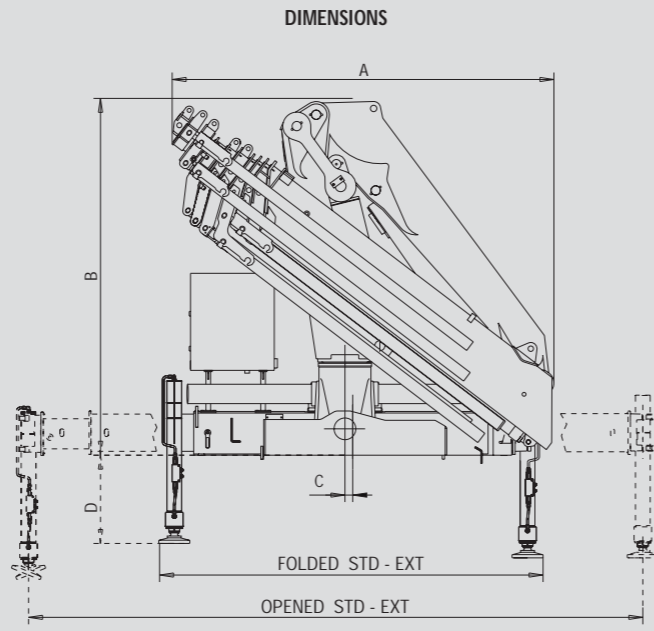
STANDARD

-  400°
Angolo di rotazione / Slewing angle
-  1130
Serbatoio olio / Oil Tank
- 
Limitatore di momento / Overload device

OPTIONAL

- 
Radiocontrollo / Remote control

Model	2.35m	4.45m	6.40m	Weight (Kg)
721 A1	2.35	4.45	6.40	8100
721 A2	2.35	4.57	6.44	8050
721 A3	2.35	4.60	6.47	7830
721 A4	2.35	4.58	6.45	7600
721 A5	2.35	4.67	6.54	7395
721 A6	2.35	4.75	6.62	7215
721 A7	2.35	4.86	6.73	7030
721 A8	2.35	4.95	6.83	6880
721 A4J3	15.20	16.90	18.60	460
721 A6J2	19.10	20.45	21.95	400



Mod.	FOLDED			OPENED	
	A	B	C	STD	EXT
721 A1	2025	2300	50	2455	2500
721 A2	2095	2300	50	2455	2500
721 A3	2205	2300	50	2455	2500
721 A4	2295	2300	50	2455	2500
721 A5	2350	2300	50	2455	2500
721 A6	2400	2300	50	2455	2500
721 A7	2425	2300	50	2455	2500
721 A8	2470	2300	50	2455	2500
721 A4J3	2410	2565	50	2455	2500
721 A6J2	2450	2450	50	2455	2500

SPAZIO RICHIESTO PER L'INSTALLAZIONE
NECESSARY SPACE FOR INSTALLATION

721	Con attivazioni - With extra function	
721 A1	1035	1030
721 A2	1035	1030
721 A3	1035	1030
721 A4	1035	1030
721 A5	1035	1160
721 A6	1035	1160
721 A7	1100	/
721 A8	1100	/
721 A4J3	1150	1280
721 A6J2	1150	/



F.lli FERRARI CORPORATION S.p.A.
Via Pasubio, 3
42022 Boretto (RE) Italy
Tel. +39 0522/486311
Fax +39 0522/486330
E-mail: marketing@flliferrari.com
www.flliferrari.com

**COMPANY
WITH QUALITY MANAGEMENT
SYSTEM CERTIFIED BY DNV
= ISO 9001/2000 =**

M.K.T. 5800163 5/06 3000



721 RED POWER



F.LLI FERRARI CORPORATION S.p.A.

FERRARI 721



I

La gru F.III Ferrari mod. 721 racchiude in se caratteristiche tecniche e meccaniche di elevata qualità

- Acciai ad alto limite di snervamento
- Struttura interamente sabbiata
- Bracci esagonali
- Sbracci fino a 20.6 m (21.95 m con jib)
- Valvole di sicurezza flangiate
- Valvola rigenerativa sugli sfili idraulici
- Comandi bilaterali (no con RDC)
- Limitatore di momento (CE)
- Stabilizzatori girevoli con apertura idraulica
- Boccole autolubrificanti
- Raccorderia SAE JIC
- Gancio girevole
- Kit di montaggio compreso
- Red Power

Accessori

- Prolunghe meccaniche
- Comandi supplementari attivati *
- Traverse supplementari
- Distributore proporzionale compensato Danfoss PVG 32
- Dispositivo di controllo RLC
- Verricello idraulico
- Radiocomando
- ECM Electronic Crane Manager (solo con radiocomando)
- Filtro in pressione (solo con radiocomando)
- Scambiatore di calore
- Posto di manovra in alto
- Utilizzo con attrezzo *

*) No A7 - A8 - A6J2



GB

The crane model 721 from F.III Ferrari has been projected and manufactured with high quality technical and mechanical characteristics

- Steel with high yield strength
- Fully sandblasted structure
- Exagonal booms
- Hydraulic outreach until 20.6 m (21.95 with jib)
- Flanged safety valves
- Regenerating valve on hydraulic extensions
- Bilateral controls (no with remote control)
- Load limiting device (EC)
- Turning stabilizers with hydraulic extension
- Self-tapping bushings
- SAE JIC fittings
- Turning hook
- Mounting kit included
- Red Power

Accessories

- Mechanical extensions
- Extra functions *
- Extra beams
- Proportional control valve Danfoss PVG 32
- Load ratio checking device RLC
- Hydraulic winch
- Remote control
- ECM Electronic Crane Manager (with remote control)
- Filter in pressure (with remote control)
- Oil cooler
- Top seat
- Use with special equipments *



F

La grue modèle 721 F.III Ferrari est conçue avec des caractéristiques techniques et mécaniques de plus haute qualité

- Acier avec haut niveau de déformation plastique
- Structure complètement sablée
- Extensions hexagonales
- Portée hydraulique jusqu'à 20.6 m (21.95 avec jib)
- Soupapes de sûreté bridées
- Soupape régénération huile sur extensions hydrauliques
- Commandes bilatérales (pas avec radiocommande)
- Limiteur de moment (CE)
- Béquilles tournantes avec extension hydraulique
- Douilles autolubrifiantes
- Raccords SAE JIC
- Crochet tournant
- Kit de montage inclus
- Red Power

Accessoires

- Rallonges mécaniques
- Circuits supplémentaires activées *
- Béquilles supplémentaires
- Distributeur proportionnel Danfoss PVG 32
- Dispositif de contrôle de la charge RLC
- Treuil hydraulique
- Commande à distance
- ECM Electronic Crane Manager (avec radiocommande)
- Filtre en pression (avec radiocommande)
- Refroidisseur huile
- Siège en haut
- Utilisation avec accessoires *



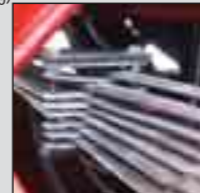
D

Das Kranmodell 721 ist mit höchster Qualität für technischen und mechanischen Eigenschaften von F.III Ferrari entworfen und hergestellt worden

- Stahl mit hoher Fließgrenze
- Sandstrahlen der Struktur
- Sechswinklige Ausschübe
- Hydraulische Reichweite bis 20.6 m (21.95 mit Jib)
- Geflanschte Sicherheitsventile
- Regenerationsventil auf den Ausschüben
- Zweiseitige Steuerungen (nicht mit Funksteuerung)
- Momentbegrenzer (EG)
- Drehbare Abstützbeine mit hydraulischem Ausfahren
- Selbstschmierende Buchsen
- SAE JIC Anschlüsse
- Schwenkbarer Haken
- Einsatzbau eingeschlossen
- Red Power

Zubehöre

- Mechanische Verlängerungen
- Zusatzfunktionen *
- Zusatzabstützungen
- Proportionale Wegeventil Danfoss PVG 32
- Vorrichtung für Lastkontrolle RLC
- Hydraulische Seilwinde
- Funksteuerung
- ECM Electronic Crane Manager (nur mit Funksteuerung)
- Druckfilter (nur mit Funksteuerung)
- Ölkühler
- Hochsitz
- Benutzung mit Zubehören *



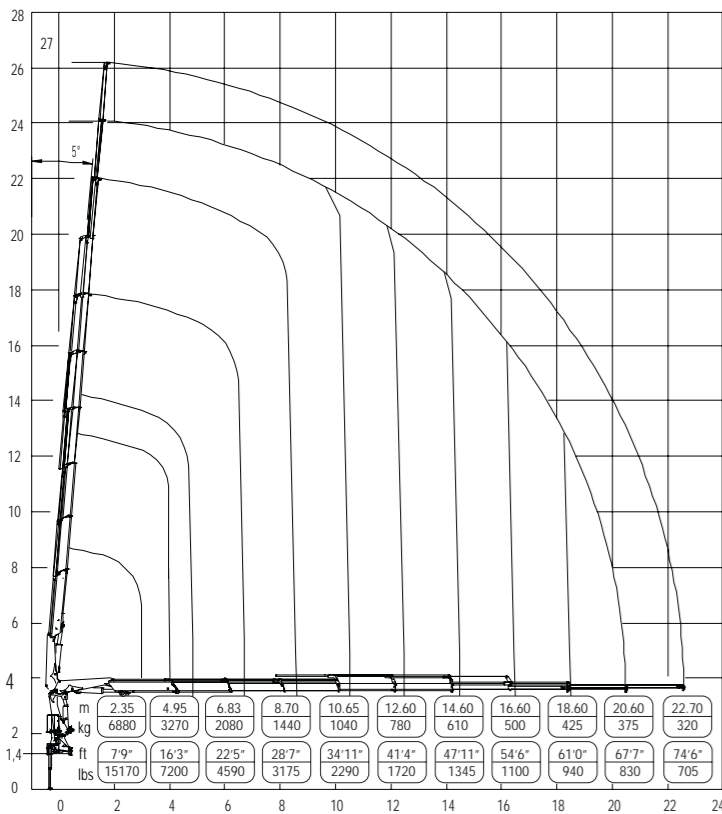
SP

El modelo de la grúa 721 de F.III Ferrari se ha proyectado y fabricado con características técnicas y mecánicas de alta calidad

- Acero en alto borde de rendimiento
- Estructura completamente arenada
- Prolongas hexagonales
- Alcances hidráulicos hasta 20.6 m (21.95 con jib)
- Válvulas de seguridad rebordeadas
- Válvula de regeneración sobre las prolongas
- Mandos bilaterales (no con con mando a distancia)
- Limitador de carga (CE)
- Patas giratorias con abertura hidráulica
- Casquillos autolubricantes
- Empalmes SAE JIC
- Gancho giratorio
- Kit de montaje incluido
- Red Power

Accesorios

- Prolongas mecánicas
- Activaciones adicionales *
- Patas adicionales
- Distribuidor proporcional Danfoss PVG 32
- Dispositivo de verificación de la carga RLC
- Cabrestante hidráulico
- Mando a distancia
- Electronic Crane Manager (con mando a distancia)
- Filtro en presión (con mando a distancia)
- Cambiador de calor
- Puesto de mando arriba
- Utilización con accesorios *



Questo dispositivo visualizza su un display collocato in prossimità dei comandi il carico applicato al gancio della gru, rendendo l'utilizzo delle prolunghe meccaniche sicuro secondo la normativa europea EN 12999.

This device shows the load at the hook on a display placed near the controls, making safe the use of the mechanical booms following the European rule EN 12999.



RADIO REMOTE CONTROL

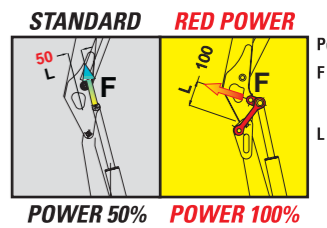


The operator can control the crane with high precision proportional levers in every position and, doing so, can supervise the loading and unloading operations. That means a great time saving and a higher safety.

All remote controls used by F.III FERRARI CORPORATION have an identification code and are shielded from electromagnetic fields and from external radio signals.

RED POWER, FINO AL DOPPIO DELLA POTENZA*

RED POWER, TWICE THE POWER*



Potenza/Power = F x L
 F = Forza del martinetto / Strength of the lifting cylinder
 L = Leva del martinetto / Lever of the lifting cylinder

Red power è sinonimo di maggior potenza di articolazione dei bracci gru, realizzato tramite un sistema di bielle di articolazione.

"Red Power" means more leverage to the crane booms. This leverage is achieved through an articulating connecting rod system.



*) In posizione verticale / In vertical position

RED POWER

