

723R

MODELLI MODELS	MOMENTO LIFTING MOMENT	SBRACCIO ORIZ. HORIZ. HYDRAULIC OUTREACH	PORTATA AL DISTRIBUTORE OIL FLOW TO THE CONTROL VALVE	SBRACCIO MAX. VERTICALE MAX VERTICAL REACH	PESO WEIGHT	PRESSIONE PRESSURE	INTERASSE STAB. STANDARD APERTI DISTANCE BETWEEN CENTRES WITH OPENED OUTRIGGERS	INTERASSE STAB. EXTRA APERTI EXTRA WIDE DISTANCE BETWEEN CENTRES WITH OPENED OUTRIGGERS
	Tm.	m.	l. min	m.	Kg	bar	mm.	mm.
723R A1	19.8	6.40	35	10.0	2450	315	5000	5990
723R A2	19.4	8.31	35	11.9	2600	315	5000	5990
723R A3	18.9	10.29	35	13.8	2750	315	5000	5990
723R A4	18.4	12.22	35	15.8	2865	315	5000	5990
723R A5	17.8	14.31	35	17.8	3010	315	5000	5990
723R A6	17.4	16.40	35	19.9	3110	315	5000	5990
723R A7	17.0	18.50	35	22.0	3225	315	5000	5990
723R A8	16.6	20.60	35	24.1	3310	315	5000	5990
723R A4J3	/	20.40	35	23.9	3410	315	5000	5990
723R A6J2	/	21.95	35	25.4	3460	315	5000	5990

Autocarro consigliato - Recommended truck - Camion conseillé - Camion aconsejado
M.T.T. ton 19 - G.V.W. ton 19

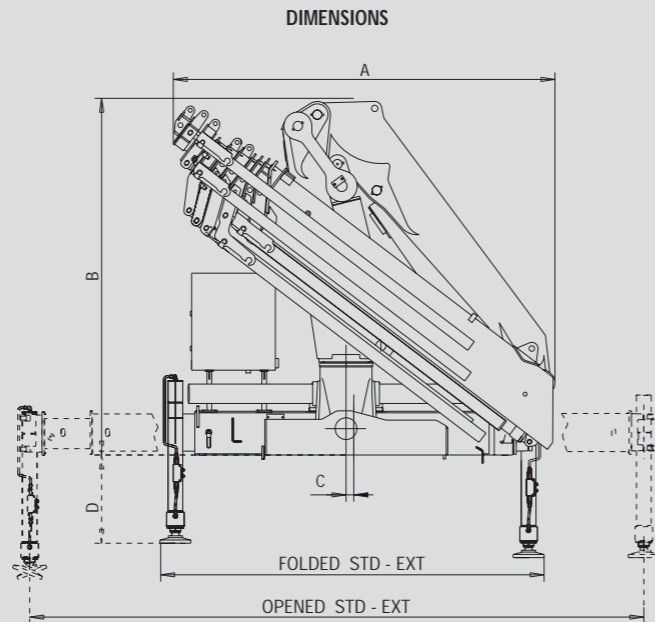
STANDARD



Mod.	A	B	C	STD	EXT	D	STD	EXT
723R A1	2.35	4.45	6.40	8210	4380	3100		
723R A2	2.35	4.57	6.44	8160	4245	2940	2250	
723R A3	2.35	4.60	6.47	7930	4100	2795	2100	1029
723R A4	2.35	4.58	6.45	7700	4000	2670	1975	1027
723R A5	2.35	4.67	6.54	7500	3810	2530	1860	1036
723R A6	2.35	4.75	6.62	7320	3665	2400	1735	1045
723R A7	2.35	4.86	6.73	7130	3490	2270	1610	1055
723R A8	2.35	4.95	6.83	6970	3360	2160	1510	1065
723R A4J3	15.20	16.90	18.60	495	425	370	325	235
723R A6J2	19.10	20.45	21.95	440	395	330	280	215

Dati, descrizioni e illustrazioni sono indicativi e non impegnano F.lli Ferrari. Gru prodotte e/o commercializzate da F.lli Ferrari - Dati, descriptions and illustrations are merely indicative and not binding. Cranes manufactured and marketed by F.lli Ferrari - Les données, descriptions et illustrations sont uniquement indicatives et n'engagent pas F.lli Ferrari. Grues produites et/ou vendues par F.lli Ferrari - Angaben, Beschreibungen und Abbildungen sind weisend und verpflichten nicht F.lli Ferrari. Die Krane werden von F.lli Ferrari hergestellt und/oder vermarktet - Los datos, las descripciones y las ilustraciones son indicativos y no implican compromiso para F.lli Ferrari. Gruas producidas y/o comercializadas por F.lli Ferrari - Os dados as descrições e ilustrações são indicativos e não comprometem F.lli Ferrari. Guindaste produzidos e/ou comercializados pela F.lli Ferrari.

**COMPANY
WITH QUALITY MANAGEMENT
SYSTEM CERTIFIED BY DNV
= ISO 9001/2000 =**



Mod.	FOLDED			OPENED		
	A	B	C	STD	EXT	D
723R A1	2025	2300	50	2455	2500	570-770
723R A2	2095	2300	50	2455	2500	570-770
723R A3	2205	2300	50	2455	2500	570-770
723R A4	2295	2300	50	2455	2500	570-770
723R A5	2350	2300	50	2455	2500	570-770
723R A6	2400	2300	50	2455	2500	570-770
723R A7	2425	2300	50	2455	2500	570-770
723R A8	2470	2300	50	2455	2500	570-770
723R A4J3	2410	2565	50	2455	2500	570-770
723R A6J2	2450	2450	50	2455	2500	570-770

SPAZIO RICHIESTO PER L'INSTALLAZIONE
NECESSARY SPACE FOR INSTALLATION

723R	Con attivazioni - With extra function	
723R A1	1035	1030
723R A2	1035	1030
723R A3	1035	1030
723R A4	1035	1030
723R A5	1035	1160
723R A6	1035	1160
723R A7	1100	/
723R A8	1100	/
723R A4J3	1150	1280
723R A6J2	1150	/



F.lli FERRARI CORPORATION S.p.A.

Via Pasubio, 3

42022 Boretto (RE) Italy

Tel. +39 0522/486311

Fax +39 0522/486330

E-mail: marketing@flliferrari.com

www.flliferrari.com

M.K.T. 5800164 7/06 3000



FERRARI
723R

723R

RED POWER



F.LLI FERRARI CORPORATION S.p.A.

FERRARI 723R



I

La gru F.Ili Ferrari mod. 723R racchiude in se caratteristiche tecniche e meccaniche di elevata qualità

- Acciai ad alto limite di snervamento
- Struttura interamente sabbiata
- Bracci esagonali
- Sbracci fino a 20.6 m (21.95 m con jib)
- Valvole di sicurezza flangiata
- Valvola rigenerativa sugli sfili idraulici
- Limitatore di momento
- Radiocomando
- Distributore proporzionale compensato Danfoss PVG 32
- ECM Electronic Crane Manager + Power Boost
- Filtro in pressione
- Stabilizzatori girevoli con apertura idraulica
- Boccole autolubrificanti
- Raccorderia SAE JIC
- Gancio girevole
- Kit di montaggio compreso
- Red Power

Accessori

- Prolonghe meccaniche
- Comandi supplementari attivati *
- Traverse supplementari
- Dispositivo di controllo RLC
- Verricello idraulico
- Scambiatore di calore
- Posto di manovra in alto
- Utilizzo con attrezzo *

*) No A7 - A8 - A6J2



GB

The crane model 723R from F.Ili Ferrari has been projected and manufactured with high quality technical and mechanical characteristics

- Steel with high yield strength
- Fully sandblasted structure
- Exagonal booms
- Hydraulic outreach until 20.6 m (21.95 with jib)
- Flanged safety valves
- Regenerating valve on hydraulic extensions
- Load limiting device
- Remote control
- Proportional control valve Danfoss PVG 32
- ECM Electronic Crane Manager + Power Boost
- Filter in pressure
- Turning stabilizers with hydraulic extension
- Self-tapping bushings
- SAE JIC fittings
- Turning hook
- Mounting kit included
- Red Power

Accessories

- Mechanical extensions
- Extra functions *
- Extra beams
- Load ratio checking device RLC
- Hydraulic winch
- Oil cooler
- Top seat
- Use with special equipments *



F

La grue modèle 723R F.Ili Ferrari est conçue avec des caractéristiques techniques et mécaniques de plus haute qualité

- Acier avec haut niveau de déformation plastique
- Structure complètement sablée
- Extensions hexagonales
- Portée hydraulique jusqu'à 20.6 m (21.95 avec jib)
- Soupapes de sûreté bridées
- Soupape régénération huile sur extensions hydrauliques
- Limiteur de moment
- Commande à distance
- Distributeur proportionnel Danfoss PVG 32
- ECM Electronic Crane Manager + Power Boost
- Filtre en pression
- Béquilles tournantes avec extension hydraulique
- Douilles autolubrifiantes
- Raccords SAE JIC
- Crochet tournant
- Kit de montage inclus
- Red Power

Accessoires

- Rallonges mécaniques
- Circuits supplémentaires activées *
- Béquilles supplémentaires
- Dispositif de contrôle de la charge RLC
- Treuil hydraulique
- Refroidisseur huile
- Siège en haut
- Utilisation avec accessoires *



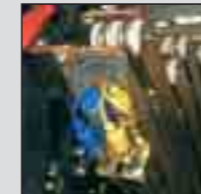
D

Das Kranmodell 723R ist mit höchster Qualität für technischen und mechanischen Eigenschaften von F.Ili Ferrari entworfen und hergestellt worden

- Stahl mit hoher Fließgrenze
- Sandstrahlen der Struktur
- Sechswinklige Ausschübe
- Hydraulische Reichweite bis 20.6 m (21.95 mit Jib)
- Geflanschte Sicherheitsventile
- Regenerationsventil auf den Ausschüben
- Momentbegrenzer
- Funksteuerung
- Proportionale Wegeventil Danfoss PVG 32
- ECM Electronic Crane Manager + Power Boost
- Druckfilter
- Drehbare Abstützbeine mit hydraulischem Ausfahren
- Selbstschmierende Buchsen
- SAE JIC Anschlüsse
- Schwenkbarer Haken
- Einsatzbau eingeschlossen
- Red Power

Zubehöre

- Mechanische Verlängerungen
- Zusatzfunktionen *
- Zusatzabstützungen
- Vorrichtung für Lastkontrolle RLC
- Hydraulische Seilwinde
- Ölkühler
- Hochsitz
- Benutzung mit Zubehören



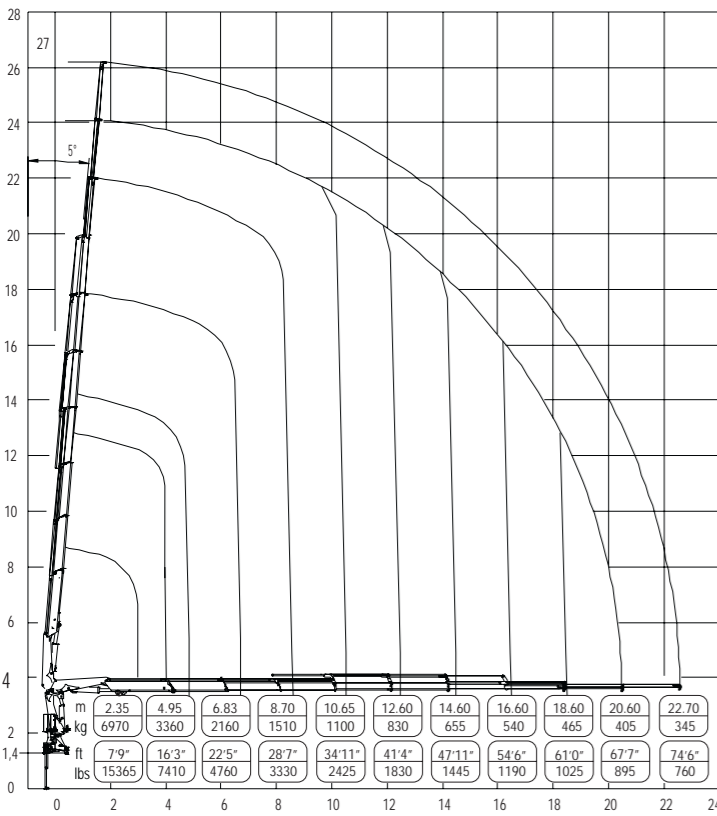
SP

El modelo de la grúa 723R de F.Ili Ferrari se ha proyectado y fabricado con características técnicas y mecánicas de alta calidad

- Acero en alto borde de rendimiento
- Estructura completamente arenada
- Prolongas hexagonales
- Alcances hidráulicos hasta 20.6 m (21.95 con jib)
- Válvulas de seguridad rebordeadas
- Válvula de regeneración sobre las prolongas
- Limitador de carga
- Mando a distancia
- Distribuidor proporcional Danfoss PVG 32
- Electronic Crane Manager + Power Boost
- Filtro en presión
- Patas giratorias con apertura hidráulica
- Casquillos autolubrificantes
- Empalmes SAE JIC
- Gancho giratorio
- Kit de montaje incluido
- Red Power

Accesorios

- Prolongas mecánicas
- Activaciones adicionales
- Patas adicionales
- Dispositivo de verificación de la carga RLC
- Cabrestante hidráulico
- Cambiador de calor
- Puesto de mando arriba
- Utilización con accesorios *



Questo dispositivo visualizza su un display collocato in prossimità dei comandi il carico applicato al gancio della gru, rendendo l'utilizzo delle prolunghe meccaniche sicuro secondo la normativa europea EN 12999.

This device shows the load at the hook on a display placed near the controls, making safe the use of the mechanical booms following the European rule EN 12999.



RADIO REMOTE CONTROL

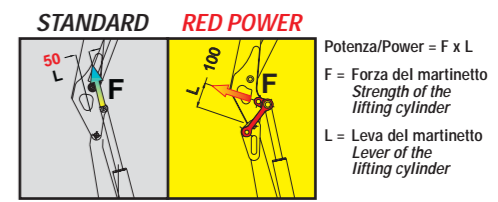


The operator can control the crane with high precision proportional levers in every position and, doing so, can supervise the loading and unloading operations. That means a great time saving and a higher safety.

All remote controls used by F.Ili FERRARI CORPORATION have an identification code and are shielded from electromagnetic fields and from external radio signals.

RED POWER, FINO AL DOPPIO DELLA POTENZA*

RED POWER, TWICE THE POWER*



POWER 50% **POWER 100%**

Red power è sinonimo di maggior potenza di articolazione dei bracci gru, realizzato tramite un sistema di bielle di articolazione.

"Red Power" means more leverage to the crane booms. This leverage is achieved through an articulating connecting rod system.

