

749R

MODELLI MODELS	MOMENTO LIFTING MOMENT	SRACCIO ORIZ. HORIZ. HYDRAULIC OUTREACH	PORTATA AL DISTRIBUTORE OIL FLOW TO THE CONTROL VALVE	SRACCIO MAX. VERTICALE MAX VERTICAL REACH	PESO WEIGHT	PRESSIONE PRESSURE	INTERASSE STAB. STANDARD APERTI DISTANCE BETWEEN CENTRES WITH OPENED OUTRIGGERS	INTERASSE STAB. EXTRA APERTI EXTRA WIDE DISTANCE BETWEEN CENTRES WITH OPENED OUTRIGGERS
	Tm.	m.	l/min	m.	Kg	bar	mm.	mm.
749R A2	46	7.85	80	12.1	4580	320	5050	7400
749R A3	-	9.9	80	14.1	4380	320	5050	7400
749R A4	-	11.9	80	16.1	5080	320	5050	7400
749R A5	-	14	80	18.2	5300	320	5050	7400
749R A6	-	16.1	80	20.3	5490	320	5050	7400
749R A7	-	25.9	80	30.1	6350	320	5050	7400
749R A8	-	18.3	80	22.5	5680	320	5050	7400
749R A6J4	-	20.5	80	24.7	5850	320	5050	7400

Autocarro consigliato - Recommended truck - Camion conseillé - Camion aconsejado
M.T.T. ton 24 - G.V.W. ton 24

STANDARD

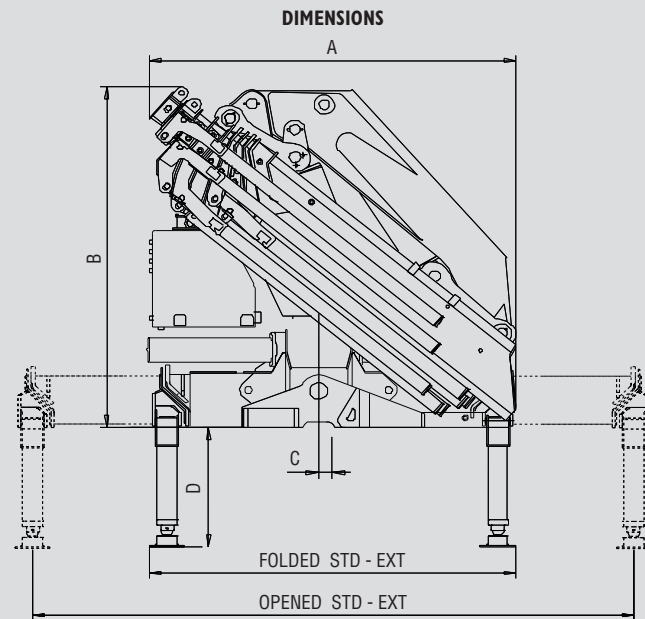


Model	2.00m	4.22m	6.00m	7.85m
749R A2	22200*	10450	7420	5700
749R A3	21700*	9880	7100	5420
749R A4	21420*	9520	6800	5150
749R A5	21000*	9320	6570	4920
749R A6	20600*	9080	6340	4700
749R A7	20150*	8900	6120	4500
749R A8	19800*	8560	5890	4300
749R A6J2	18.9m	20.6m	22.3m	24.1m
	985	860	770	708
	655	545		

*) Portata teorica
Theoric lifting capacity

Dati, descrizioni e illustrazioni sono indicativi e non impegnano F.lli Ferrari. Gru prodotte e/o commercializzate da F.lli Ferrari - Data, descriptions and illustrations are merely indicative and not binding. Cranes manufactured and marketed by F.lli Ferrari - Les données, descriptions et illustrations sont uniquement indicatives et n'engagent pas F.lli Ferrari. Grues produites et/ou vendues par F.lli Ferrari - Angaben, Beschreibungen und Abbildungen sind weisend und verpflichten nicht F.lli Ferrari. Die Kräne werden von F.lli Ferrari hergestellt und/oder vermarktet - Los datos, las descripciones y las ilustraciones son indicativos y no implican compromiso para F.lli Ferrari. Gruas producidas y/o comercializadas por F.lli Ferrari - Os dados as descrições e ilustrações são indicativos e não comprometem F.lli Ferrari. Guindaste produzidos e/ou comercializados pela F.lli Ferrari.

COMPANY
WITH QUALITY MANAGEMENT
SYSTEM CERTIFIED BY DNV
= ISO 9001/2000 =



Mod.	FOLDED		OPENED	
	A	B	C	D
749R A2	2128	2460	95	2503
749R A3	2210	2460	95	2503
749R A4	2315	2460	95	2503
749R A5	2372	2460	95	2503
749R A6	2455	2460	95	2503
749R A7	2515	2725	95	2503
749R A8	2464	2460	95	2503
749R A6J4	2509	2480	95	2503

SPAZIO RICHIESSO PER L'INSTALLAZIONE NECESSARY SPACE FOR INSTALLATION

749R	Con attivazioni - With extra function
749R A2	1360
749R A3	1360
749R A4	1360
749R A5	1360
749R A6	1360
749R A7	1500
749R A8	1500
749R A6J4	1530

*) Non attivabile
No extra functions



F.lli FERRARI CORPORATION S.p.A.

Via Pasubio, 3

42022 Boretto (RE) Italy

Tel. +39 0522/964921

Fax +39 0522/964405

E-mail: marketing@flliferrari.com

www.flliferrari.com

M.K.T. 5800133 07/05 3000



749R

RED POWER



F.LLI FERRARI CORPORATION S.p.A.

FERRARI 749R



I

La gru F.Ili Ferrari mod. 749 racchiude in se caratteristiche tecniche e meccaniche di elevata qualità

- Acciai ad alto limite di snervamento
- Struttura interamente sabbiata
- Bracci esagonali
- Sbracci fino a 20.5 m (25.9 con Jib)
- Valvole di sicurezza flangiata
- Valvola rigenerativa sugli sfili idraulici (RS)
- Raccordi girevoli su distributore
- Distributore proporzionale Compensato Danfoss PVG 32
- Limitatore di momento
- Power Boost (PB)
- ECM
- Comando a distanza
- Stabilizzatori orientabili
- Stab. estendibili idraulicamente
- Pattini di scorrimento con ripresa gioco autoserrante
- Boccole autolubrificanti
- Raccorderia SAE J 1514I
- Piattello stabilizzatore snodato
- Gancio girevole
- Kit di montaggio compreso
- Red Power
- Filtro di pressione/scarico

Accessori

- Prolunghe meccaniche
- Traverse supplementari
- Comandi supplementari attivati*
- Verricello idraulico
- Utilizzo con attrezzo*
- Dispositivo di controllo RLC
- Scambiatore di calore

*) No A3 - A5 - A7 - A8



GB

The crane model 749 from F.Ili Ferrari has been projected and manufactured with high quality technical and mechanical characteristics

- Steel at high yielding edge
- Structure fully sandblasted
- Hexagonal booms
- Hydraulic outreach until 20.5 mt (25.9 with Jib)
- Flanged valves
- Regenerating valve on hydraulic booms (RS)
- Turning fittings on the control valve
- Proportional control valve Danfoss PVG 32
- Load limiting device
- Power Boost (PB)
- ECM
- Remote control
- Fixed outriggers
- Hydraulic opening cylinders
- Sliding pad with self-adjusting gap
- Self-tapping bushings
- SAE JIC 1514I fittings
- Articulated outrigger plate
- Turning hook
- Mounting kit included
- Red Power
- Pressure/return filter

Accessories

- Mechanical booms
- Extra beams
- Extra functions*
- Hydraulic winch
- Use with special equipments*
- Load radio checking device RLC
- Oil cooler



F

La grue modèle 749 F.Ili Ferrari est conçue avec des caractéristiques techniques et mécaniques de plus haute qualité

- Acier à haut niveau de déformation plastique
- Structure complètement sablée
- Rallonges hexagonales
- Portée Hydraulique jusqu'à 20.5 Mt (25.9 mt avec Jib)
- Vannes bridées
- Vanne regeneration huile sur rallonges hydrauliques (RS)
- Raccords tournants sur distributeur
- Distributeur proportionnel Danfoss PVG 32
- Limiteur de moment
- Power Boost (PB)
- ECM
- Commande à distance
- Béquilles fixes
- Béquilles à ouverture hydraulique
- Patins de coulissement auto enregistrales
- Douilles autolubrifiantes
- Raccords SAE-JIC 1514I
- Plat d'appui béquille avec joint à rotule
- Crochet tournant
- Kit de montage inclus
- Red Power
- Filtre pression/de retour

Accessoires

- Rallonges mécaniques
- Poutres àéquilles supplémentaires
- Circuits supplémentaires activées*
- Treuil hydraulique
- Utilisation avec accessoires*
- Dispositif de contrôle de la charge RLC
- Refroidisseur huile



D

Das Kranmodell 749 vom F.Ili Ferrari ist mit höchsten Qualität für technischen und mechanischen Eigenschaften projiziert und hergestellt worden

- Stahl am hohen einträglichen Rand
- Struktur voll Sand gestraht
- Sechseckige Ausschube
- Hydraulischen Reichweiten bis 20.5 mt. (25.9 mt mit Jib)
- Geflanscht Ventilen
- Regenerations-Ventil auf die Ausschube (RS)
- Drehbar Auschlusse auf Steuerung
- Proportional Steuerung Danfoss PVG 32
- Lasthaltventil
- Power Boost (PB)
- ECM
- Fernsteuerung
- Fest Abstützungen
- Abstützungen mit hydraulischen Öffnung
- Gleitschuh mit Selbstnachsteller Spiel
- Selbstschmierende Buchsen
- Gelenkstutzscheibe
- SAE-JIC 1514I Anschlusse
- Gelenkstutzscheibe
- Schwenkbar Haken
- Einsatzbau eingeschlossen
- Red Power
- Ablauf/Deückfilter

Zubehöre

- Mechanische Ausschube
- Zusatzabstützungen
- Zusatzfunktionen*
- Hydraulischer Winde
- Benutzung mit Zubehöre*
- Gewichtskontrolle Vorrichtung RLC
- Ölkühler



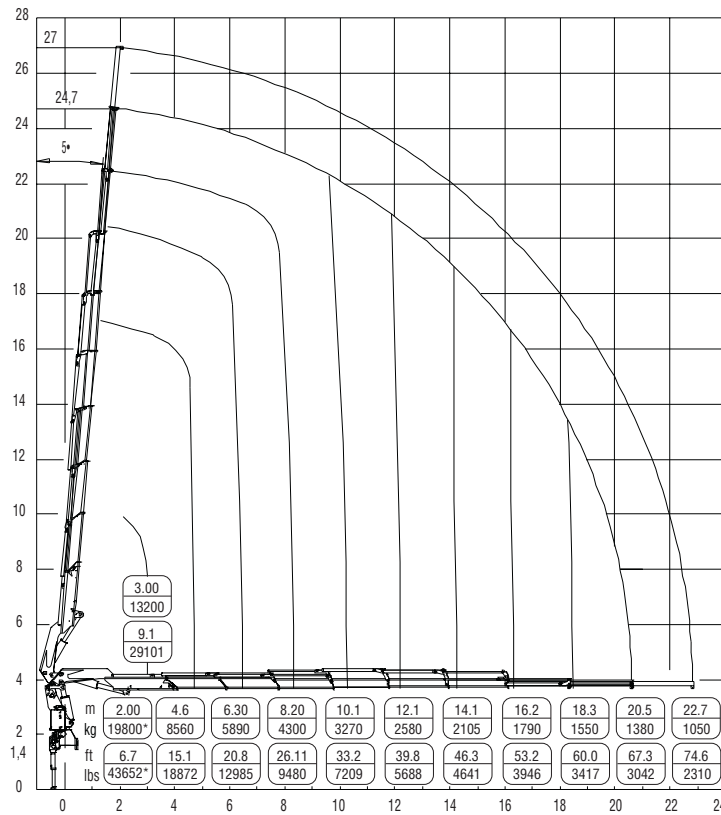
SP

El modelo de la grúa 749 de F.Ili Ferrari se ha proyectado y fabricado con características técnicas y mecánicas de alta calidad

- Acero en el alto borde de rendimiento
- Estructura completamente arenada
- Prolongas hexagonales
- Alcances hidraulicos hasta mt. 20.5 (25.9 mt con Jib)
- Valvulas rebordeadas
- Valvula de regeneración sobre las prolongas (RS)
- Empalmes giratorios sobre distribuidor
- Distribuidor proporcional Danfoss PVG 32
- Limitador de momento
- Power Boost (PB)
- ECM
- Mando a distancia
- Patas fijas
- Patas con abertura hidraulica
- Patin de deslizamiento con juego autoregurable
- Casquillos autolubrificantes
- Empalmes SAE-JIC 1514I
- Plato de apoyo de patas articulado
- Gancho giratorio
- Kit de montaje incluido
- Red Power
- Filtro de pression/descarica

Acesorios

- Prolongas mecamicas
- Patas adicionales
- Activaciones adicionales*
- Cabrestante hidraulico
- Utilización con acesorios*
- Dispositivo de verificación de carga RLC
- Cambiador de calor



*) Portata teorica
Theoric lifting capacity



Questo dispositivo visualizza su un display collocato in prossimità dei comandi il carico applicato al gancio della gru, rendendo l'utilizzo delle prolunghe meccaniche sicuro secondo la normativa europea EN 12999.

This device shows the load at the hook on a display placed near the controls, making safe the use of the mechanical booms following the European rule EN 12999.



RADIO REMOTE STANDARD



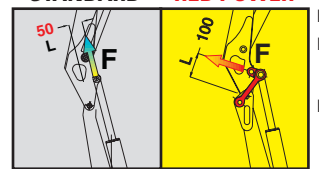
The operator can control the crane with high precision proportional levers in every position and, doing so, can supervise the loading and unloading operations. That means a great time saving and a higher safety.

All the remote control used by F.Ili FERRARI CORPORATION have an identification code and are shielded from electromagnetic fields and from external radio signals.

RED POWER, FINO AL DOPPIO DELLA POTENZA*

RED POWER, TWICE THE POWER*

STANDARD RED POWER



POWER 50% POWER 100%

Potenza/Power = F x L
F = Forza del martinetto
Strength of the jack luff cylinder
L = Leva del martinetto
Lever of the jack luff cylinder

Red power è sinonimo di maggior potenza di articolazione dei bracci gru, realizzato tramite un sistema di bielle di articolazione.

"Red Power" means more leverage to the crane booms. This leverage is achieved through an articulating connecting rod system.



*) In posizione verticale
In vertical position

