

# EC3200

THE EC SERIES OF SERVICE CRANES BY





## ■ SPECIFICATION INFORMATION

Crane Rating: 11,500 ft-lbs (1.59 ton-meters)  
Standard Boom Length: 7' (2.13 m) from CL of Crane

Boom Extension:  
• 1st stage: Hydraulic 48" (121.9 cm)  
• 2nd stage: Manual 48" (121.9 cm)

Max. Horizontal Reach: 15' (4.57 m) from CL of Crane

Maximum Vertical Lift:  
(from crane base) 16' 2" (5.28 m)

Boom Elevation: -5 to +80 degree

Stowed Height:  
(crane only) 24" (61.0 cm)

Mounting Space Required: 18" x 15" (45.7 x 38.1 cm)

Shipping Weight: 730 lbs (331 kg)

Controls: Radio control standard for all functions

### Winch

- Rope Length: 65' (19.8 m)
- Rope Diameter: 7/32" (.56 cm)
- Line pull speed: 15 ft/min (4.6 m/min)
- Max. single part line: 1600 lbs (725 Kg)
- Max. double part line: 3200 lbs (1450 Kg)

Rotation: 410 degree power  
(worm gear)

Lifting Capacities: 1625 lbs @ 7' (737 Kg @ 2.1 m)  
640 lbs @ 15' (260 Kg @ 4.6 m)

Power Supply Required: 12 volt power unit  
2.0 gpm @ 2600 psi  
(7.57 lpm @ 179 bars)

## ■ DEFINING CHARACTERISTICS

### Planetary Drive Winch System

The winch is equipped with a 1.8 HP permanent magnet electric motor with a 261:1 planetary gear reduction system. This ensures that your winch will never quit lifting before it reaches the full rated capacity.

### Double Boom Design

The double boom design makes it nearly twice as strong as the nearest competitor.

### Gear Bearing Rotation

Uses same rotation system as the larger class cranes. There are no plastic bushings or brass gears in the rotation system. It uses a high strength steel ball bearing turntable gear, a high strength steel worm gear, and a cast steel worm gear housing.

### Integral Rotation Stop

410 degrees of rotation with an integrated rotation stop. Integrated stops allow you the greatest performance while protecting wires and hoses from damage.

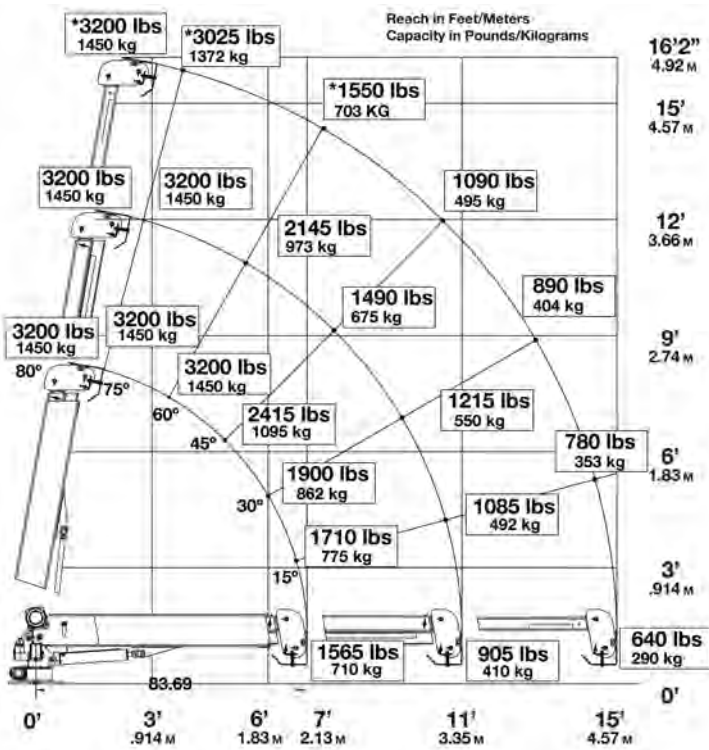
### 15' of Reach

Hydraulic 1st stage extension. Manual 2nd stage extension.

### Radio Remote

Comes standard with a radio remote control.

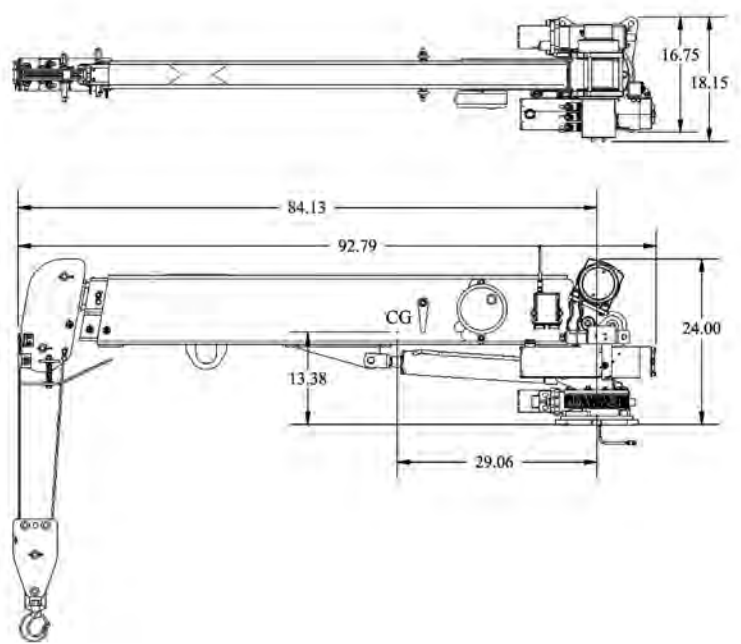
### ■ EC3200 CAPACITY CHART



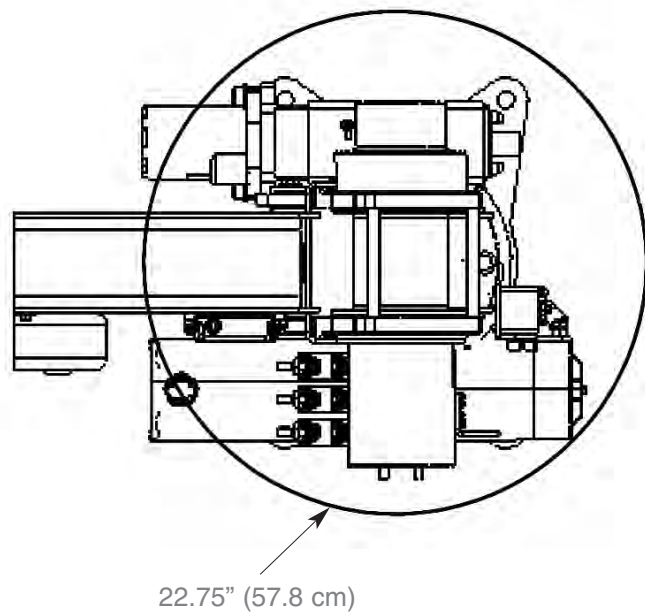
Weight of load handling devices are part of the load lifted and must be deducted from the capacity.

Maximum 1 - part line capacity is 1600 lbs. (726 kg). For greater loads, use 2 - part line.

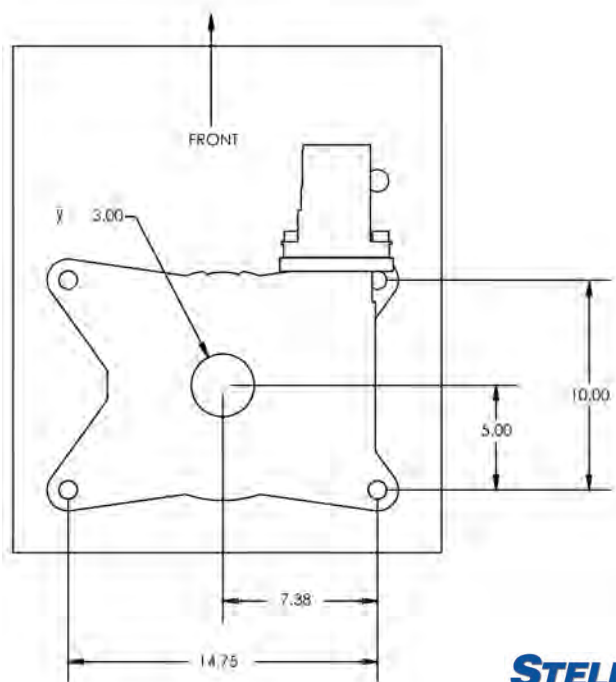
### ■ GEOMETRIC DIMENSIONS



### ■ ROTATIONAL CLEARANCE

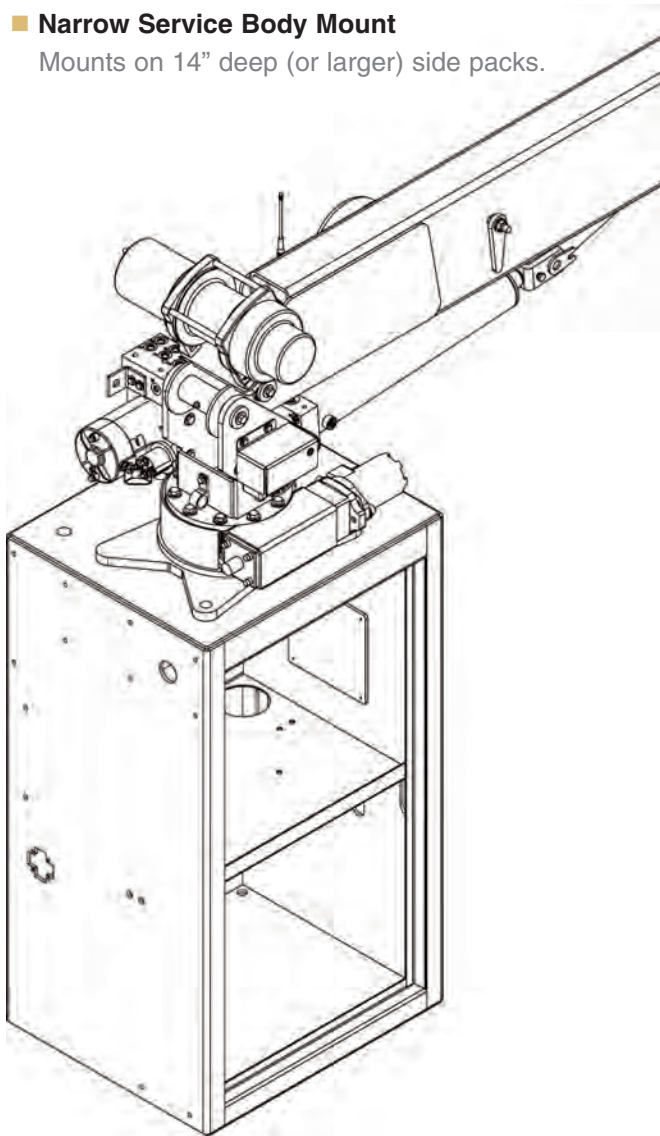


### ■ HOLE MOUNTING DETAIL



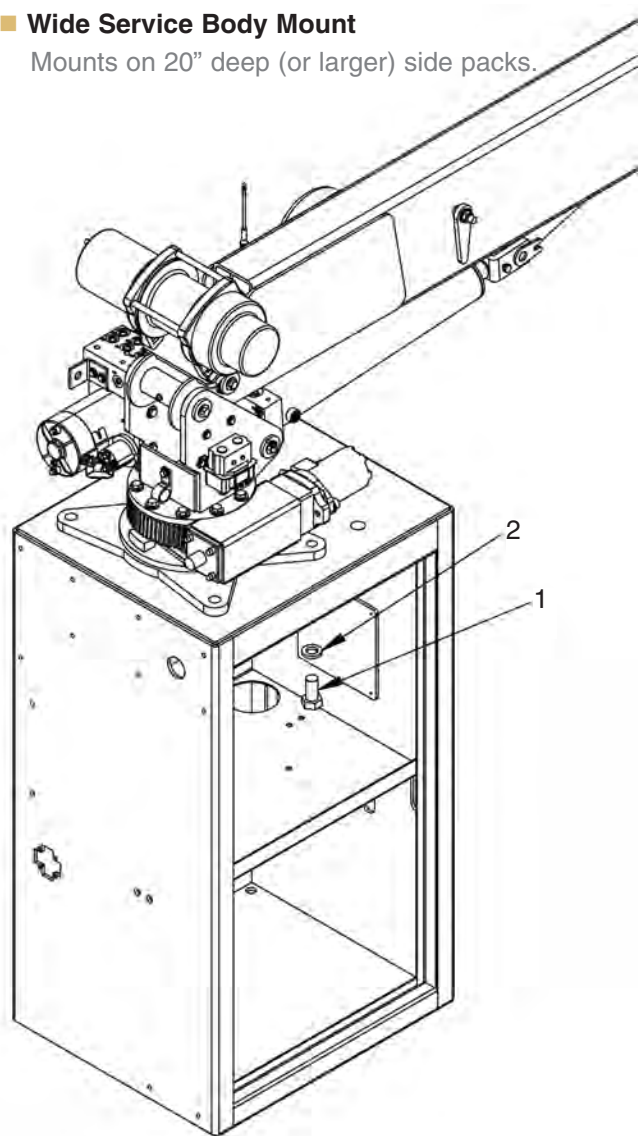
■ **Narrow Service Body Mount**

Mounts on 14" deep (or larger) side packs.



■ **Wide Service Body Mount**

Mounts on 20" deep (or larger) side packs.



Item	Part	Description	Qty.
1	42985	Cap Scr 0.88-9x1.75 HHGR8ZY	4
2	8648	Washer 0.88 SAE GR8	4

Your local dealer:



*Our People. Our Products.*

190 State Street  
 P.O. Box 169  
 Garner, IA 50438  
 Telephone: (641) 923-3741 • (800) 321-3741  
 Fax: (641) 923-2812  
 Internet: [www.stellarindustries.com](http://www.stellarindustries.com)  
 Email: [sales@stellarindustries.com](mailto:sales@stellarindustries.com)

An Employee Owned Company.  
 Copyright © 2008 Stellar Industries, Inc.