

EXPECT MORE. CHOOSE READING.



SL SERVICE BODY

Check inside
for the SL Body
with Aluminum
Spacemaker lids.



Expect more standard features and more exclusive options with the SL!



PRICED RIGHT AND VALUE PACKED!

- **STAINLESS STEEL** bolt on hinges
- **EXCLUSIVE** standard features
- **LEGENDARY** quality and durability
- **TIMELESS** design, maximized for efficiency

There may be other service bodies, but there's

Reading is setting a new standard in value and economy with the Reading SL Service Body. Utilizing patent pending modern and impressive list of traditional Reading standard features, yet is priced far lower than expected. It's yet another reason why you



Manufactured With Confidence



A40-A60 Coating Weight Pressed Diamond Floor Plate Steel and Tailgate Inner Panel
Industry Exclusive A40-A60 Coating Weight Steel diamond surface provides additional corrosion protection & better traction. Patent Pending



Slam Action Tailgate with a polished stainless steel handle and convenient pickup-style design. Equipped with rugged double-panel construction and durable stainless steel hardware.



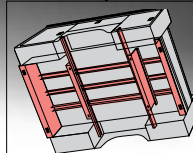
Poached Anti-Slip Bumper
Coated steel treadplate. Poached design provides slip resistant step surface. Recessed and non-recessed available. Finished in white powder coat.



Modern Automotive Style Rectangular Tail Lights
Provides modern look and are leak resistant.



Removable Stainless Steel Tailgate Knee Brace
Allows the tailgate to swing down completely.



Rugged Understructure
Fully unitized welding, with U-beam girders braced and reinforced at all critical points. Acrylic E-coat primed and coated with a tough white Powder Coat finish.

only one SL.

ular production techniques, the SL offers an
you can Expect More when you Choose Reading!



1

A40-A60 Coating Weight Steel

2

Powder Coat Finish



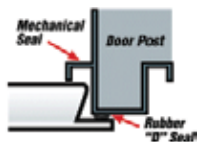
Options

Frame mounted pooched anti-slip bumper with
L.E.D. lights
(pictured on SL with aluminum spacemaker lids on last page)



Heavy-Duty Compartment Doors

18 Gauge outer door skin with double-paneled construction and internal reinforcement that makes this door the thickest and strongest door in the industry.



Exclusive Dual-Pro® Seal System

The patented design increases clear door openings in every compartment of the body. The large automotive quality bubble type seal and mechanical seal provide a dual line of defense against the elements.



Stainless Steel Bolt On Hinges

feature a fully concealed pin protected from the elements and provides smooth reliable operation.



Stainless Steel T-handle locks and hidden fasteners

Featuring pass through opening between horizontal and rear vertical compartments for long objects. Body sides are two-sided, zinc coated steel, and have white powder coat finish.



Nitrogen Strut Door Holders

All vertical compartment doors are equipped with nitrogen strut door holders where the internal dampeners control the opening and closing.



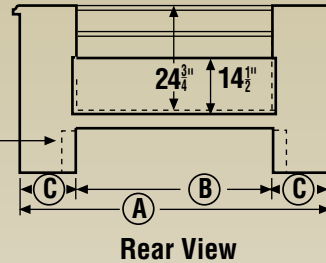
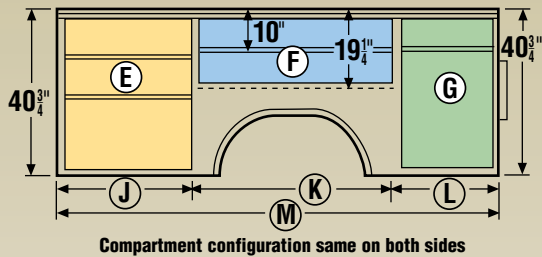
Aluma-Fill®

Aluminum fuel fill receptacle protects the body from accidental nicks and scratches.

MODELS & DIMENSIONS

Model	Approx. Wt. Steel	Cab-to-Axle	A	B	C	D	J	K	L	M	Approximate Compartment Clear Door Openings				
											E	F	G	H	I
*U98AQ-SW	1023#	56"	76-1/2"	48-1/2"	14"	-	28"	48"	22"	98"	22-1/2"x35-1/4"	46-1/2"x14"	16-1/2"x35-1/4"	-	-
*U108AQ-DW	1359#	60"	93"	50"	21-1/2"	-	34-3/4"	47"	26-1/4"	108"	29-1/4"x35-1/4"	45-1/2"x14"	20-3/4"x35-1/4"	-	-
*U132AQ-DW	1832#	84"	92"	50"	21-1/2"	26"	30"	49-3/4"	26-1/4"	132"	22-1/2"x35-1/4"	48-1/4"x14"	20-3/4"x35-1/4"	35"x35-1/4"	11-1/2"x35-1/4"

Models U98AQ-SW, U108AQ-DW



NOTE: U98A-SW not available for mounting on Dodge chassis

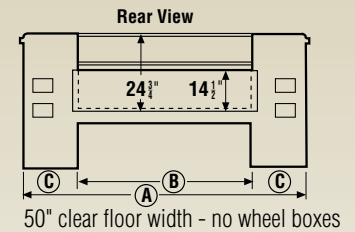
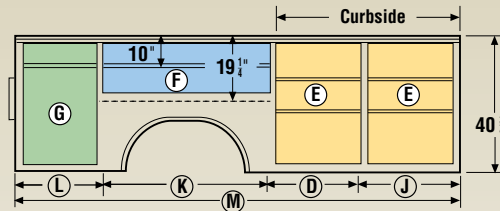
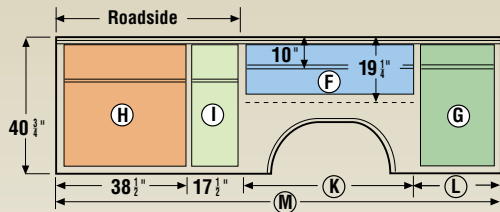
Installers note:
*Universal mounting

Shelves and dividers:

U98AQ-SW: (8) shelves, (32) dividers
U108AQ-DW: (8) shelves, (40) dividers
U132AQ-DW: (9) shelves, (40) dividers

NOTE: Divider spacing on 2" centers

Models U132AQ-DW



SL Standard Line Body with Aluminum Spacemaker lids



Features:

- SL spacemaker only available in 98"SW and 108"DW sizes
- Stainless steel 3-point T-handle locks
- L.E.D. lights throughout body with the exception of back-up and license plate lights
- Aluminum textured spacemaker lids with clear powder coat protection finish
- Frame mounted poached anti-slip bumper with L.E.D. lights
- Available in Lo Profile (LP) model



Sold and serviced locally by:

EXPECT MORE. CHOOSE READING.



800.458.2226 | www.readingbody.com