



**STELLAR®** I4528 TECHNICAL SPECIFICATION GUIDE

# 14528

Service Crane and T3 Service Body



*Our People. Our Products.*

# STELLAR® I4528 TECHNICAL SPECIFICATION GUIDE

## ■ SPECIFICATION INFORMATION

Crane Rating:	70,000 ft-lbs (9.68 ton-m)
Standard Boom Length:	13' (3.96 m) from CL of Crane
Boom Extension:	
• 1st stage:	Hydraulic 90" (228.6 cm)
• 2nd stage:	Hydraulic 90" (228.6 cm)
Max. Horizontal Reach:	28' (8.53 cm) from CL of Crane
Max. Vertical Lift: (from crane base)	29' 4" (8.94 m)
Boom Elevation:	-5° to +80°
Stowed Height: (crane only)	43" (102.9 cm)
Mounting Space Required:	25" x 22" (63.5 x 55.9 cm)
Shipping Weight:	3100 lbs (1406 kg)
Controls:	Radio control standard for all functions.
Winch	
• Rope Diameter:	1/2" (1.27 cm)
• Line pull speed:	60 ft/min (18.29 m)
• Max. single part line:	7000 lbs (3175 kg)
• Max. double part line:	14,000 lbs (46350 kg)
Rotation:	400° power (worm gear)
Lifting Capacities:	5375 lbs @ 13' (2440 kg @ 3.96 m) 2500 lbs @ 28' (1130 kg @ 8.54 m)
Power Supply Required:	PTO & Pump 12 gpm @ 2600 psi (45.4 lpm @ 180 bars)

NOTE: All Stellar cranes meet ANSI B30.5 and OSHA 1910.180 specifications.  
Specifications subject to change without notification.

## ■ DEFINING CHARACTERISTICS

### Remote Control

Stellar Industries was the first U.S. manufacturer to include the state-of-the-art fully proportional multi-functional remote control as a standard feature. The radio remote incorporates a variable speed trigger that allows the operators to feather the crane with precise control. Additionally, the radio remote control handle features engine start/stop functions, compressor on/off, engine speed controls, and an emergency shut-off.

### Planetary Drive Winch System

To maximize winch speed, Stellar Industries has incorporated a planetary drive winch system with line speeds up to 60-ft/min (18.29 m), giving the 14528 crane over twice the speed of the competition. In addition to speed, the planetary winch also provides mechanical and hydraulic breaks for added security.

### Hexagonal Boom Design

Hexagonal booms are stronger and greatly reduce boom flex and side to side movement.

### Greaseless Bushings

Maintenance free greaseless bushings.

### Stainless Steel Pivot Pins

Lower maintenance and extend life.

### 28' of Hydraulic Reach

2-stage hydraulic extensions. No manual extensions.

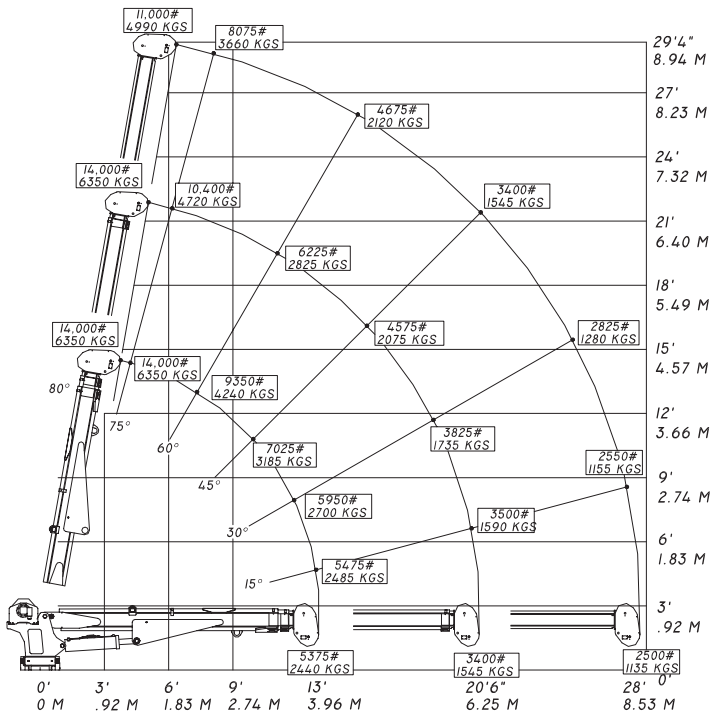
### Dual Acting Counter Balance Valves

Integrated into cylinders.

### Flip Sheave Standard

### Anti Two-Block Device

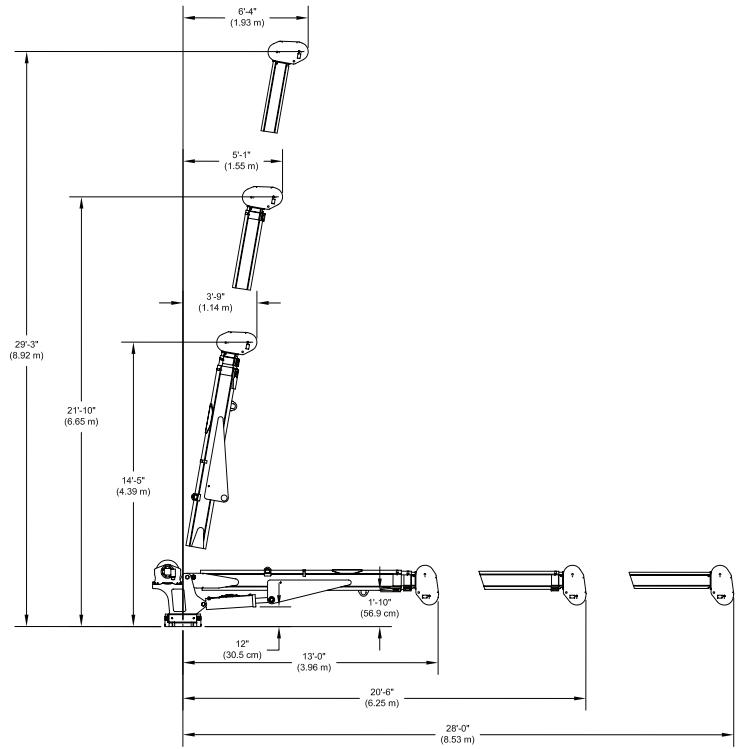
### 14528 CAPACITY CHART



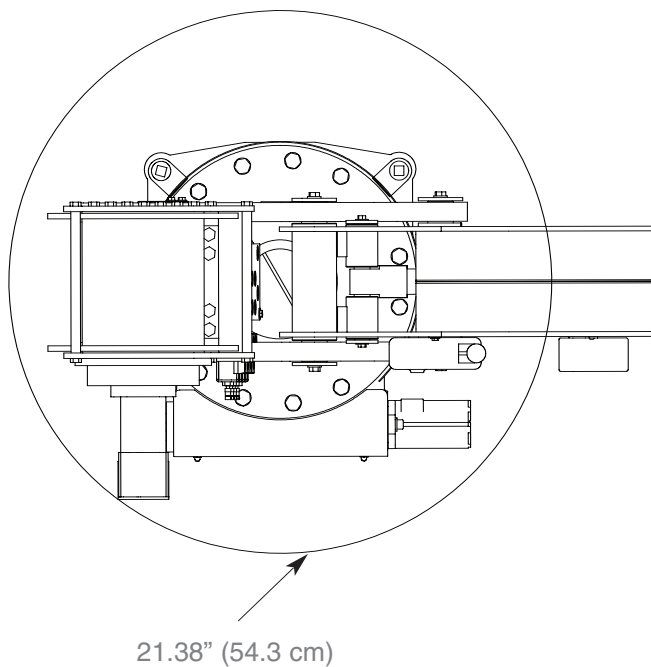
Weight of load handling devices are part of the load lifted and must be deducted from the capacity.

Maximum 1 - part line capacity is 7000 lbs. (3175 kg). For greater loads, use 2 - part line.

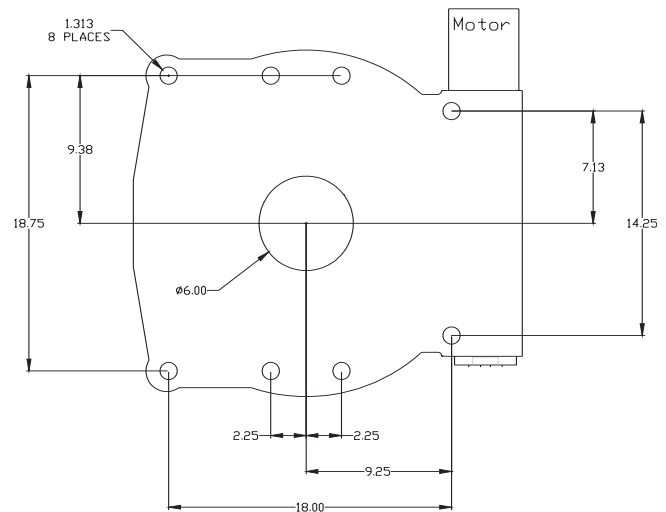
### GEOMETRIC DIMENSIONS



### ROTATIONAL CLEARANCE



### HOLE MOUNTING DETAIL



■ Service Bodies

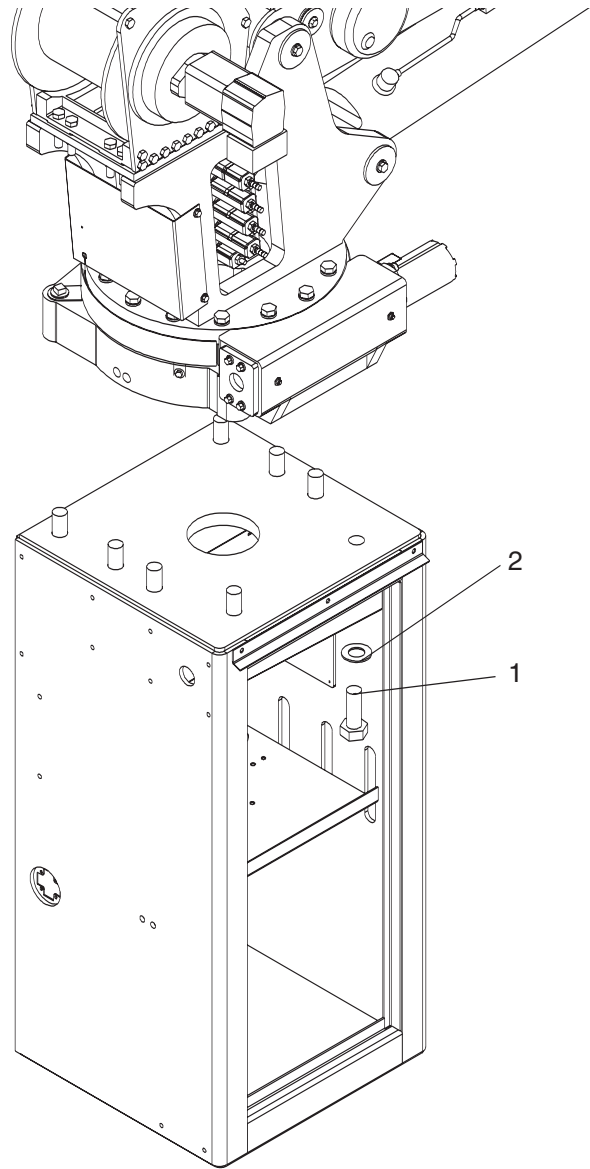
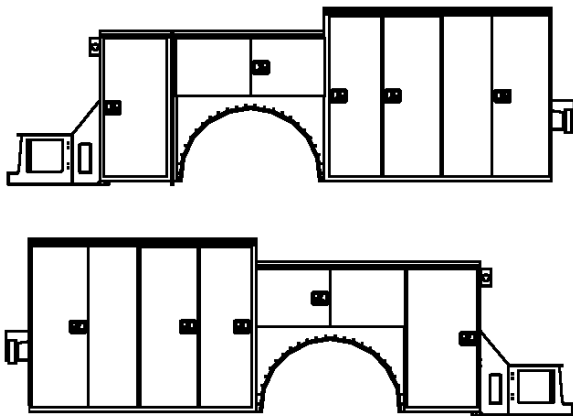
**T3S Service Body**

Applicable Chassis: 33000 GVWR Chassis and up

Crane Models: 14528

Cab to Axle: 120" (304.8 cm)  
 Body Length Nominal: 157" (398.78 cm)  
 Body Height: 52"/60" (132.1/152.4 cm)  
 Body Width: 96" (243.84 cm)  
 Compartment Depth: 22" (55.88 cm)  
 Floor Width: 50"/52" (127/132.1 cm)  
 Net Weight: 5200 lbs (2358.68 kg)

(Also available in a T3T tandem body)



Item	Part	Description	Qty.
1	9180	Cap Scr 1.25-7x3.50 GR8	6
2	16654	Washer 1.25 SAE Flat Yellow GR8	6

Your local dealer:



*Our People. Our Products.*

190 State Street  
 P.O. Box 169  
 Garner, IA 50438  
 Telephone: (641) 923-3741 • (800) 321-3741  
 Fax: (641) 923-2812  
 Internet: [www.stellarindustries.com](http://www.stellarindustries.com)  
 Email: [sales@stellarindustries.com](mailto:sales@stellarindustries.com)

An Employee Owned Company.  
 Copyright © 2008 Stellar Industries, Inc.