



**STELLAR® 4420 TECHNICAL SPECIFICATION GUIDE**

# 4420

Service Crane and T1-11 Service Body



*Our People. Our Products.*

# STELLAR® 4420 TECHNICAL SPECIFICATION GUIDE

## ■ SPECIFICATION INFORMATION

Crane Rating:	16,000 ft-lbs (2.23 ton-meters)
Standard Boom Length:	10' (3.05 m) from CL of Crane
Boom Extension:	
• 1st stage:	Hydraulic 60" (152.4 cm)
• 2nd stage:	Manual 60" (152.4 cm)
Max. Horizontal Reach:	20'9" (6.32 m) from CL of Crane
Max. Vertical Lift: (from crane base)	21' 6" (6.55 m)
Boom Elevation:	-5° to +80°
Stowed Height: (crane only)	33.5" (85.1 cm)
Mounting Space Req:	18" x 15" (45.7 x 38.1 cm)
Shipping Weight:	1050 lbs (475 kg)
Controls:	20 foot (6.10 m) cord with hand held control
Winch	
• Rope Diameter:	5/16" (.794 cm)
• Line Pull Speed:	25 ft/min (7.62 m)
• Max. Single Part Line:	2000 lbs (905 kg)
• Max. Double Part Line:	4000 lbs (1815 kg)
Rotation:	370° power (worm gear)
Lifting Capacities:	1600 lbs @ 10' (725 kg @ 3.05 m) 800 lbs @ 20' (365 kg @ 6.10 m)
Power Supply Required:	12-volt power unit 2.0 gpm @ 2600 psi (7.57 lpm @ 179 bars)

Available in hydraulic version also.

## ■ DEFINING CHARACTERISTICS

### Planetary Drive Winch System

To maximize winch speed, Stellar Industries has incorporated a planetary drive winch system with line speeds up to 25-feet per minute. In addition to speed, the planetary winch also provides mechanical and hydraulic breaks for added security.

### Hexagonal Boom Design

Hexagonal booms are stronger and greatly reduce boom flex and side to side movement.

### Greaseless Bushings

Maintenance free greaseless bushings.

### Stainless Steel Pivot Pins

Lower maintenance and extend life.

### 20' 9" of Reach

Hydraulic 1st stage extension. Manual 2nd stage extension.

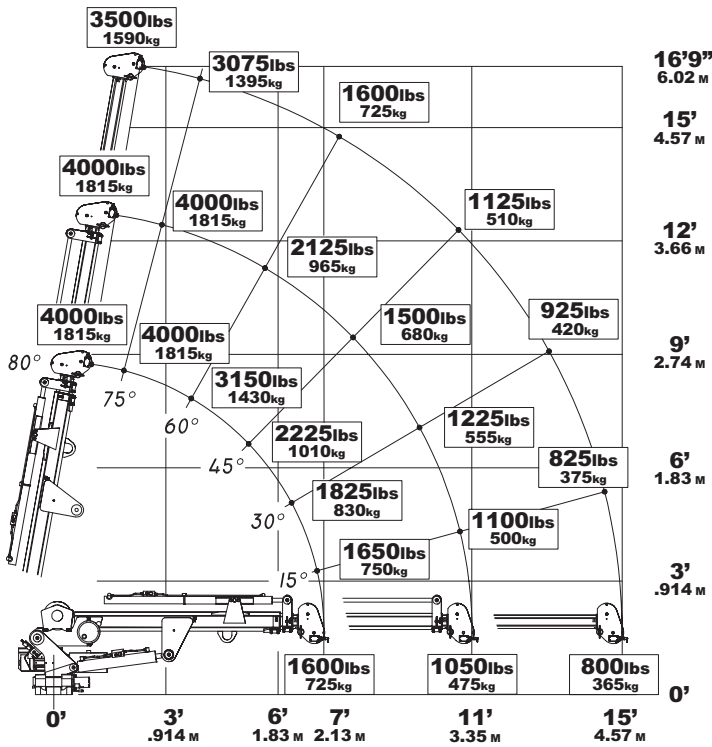
### Dual Acting Counter Balance Valves

Integrated into cylinders.

### Flip Sheave Standard

### Anti Two-Block Device

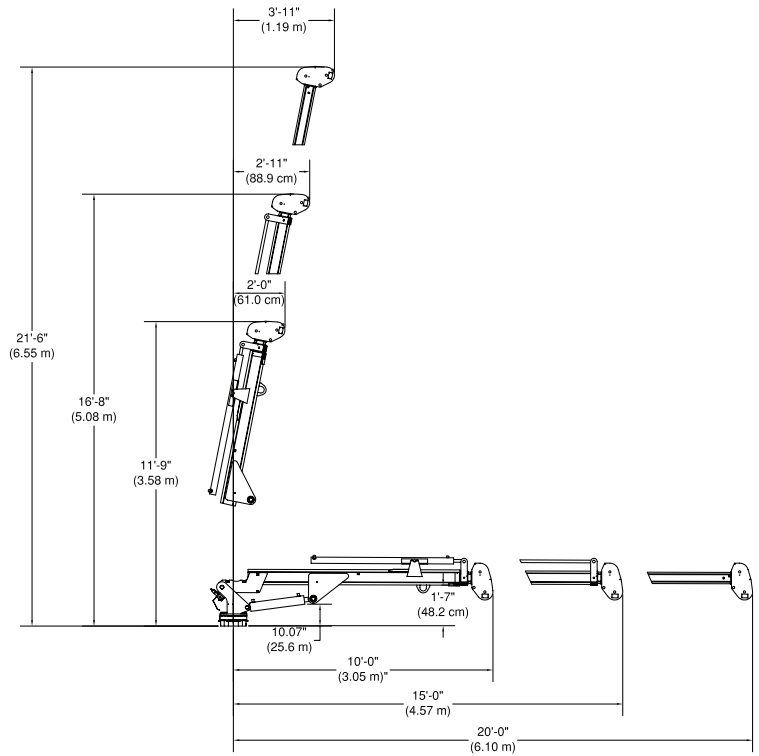
### 4420 CAPACITY CHART



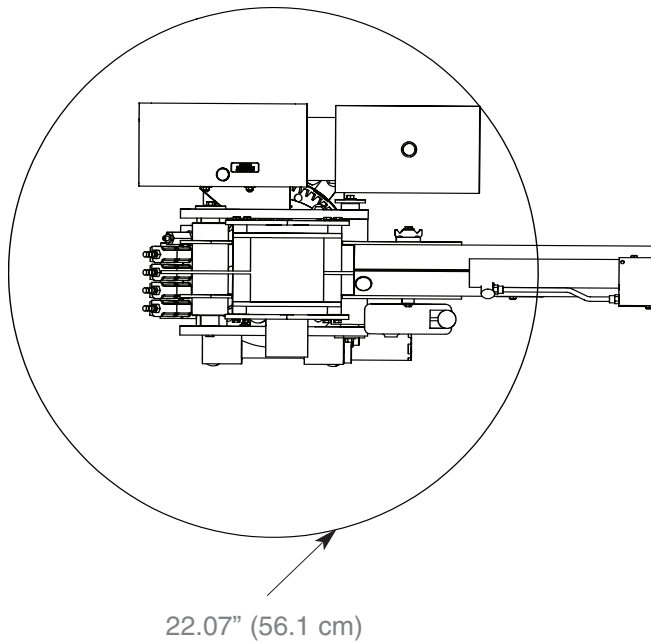
Weight of load handling devices are part of the load lifted and must be deducted from the capacity.

Maximum 1 - part line capacity is 2000 lbs. (905 kg). For greater loads, use 2 - part line.

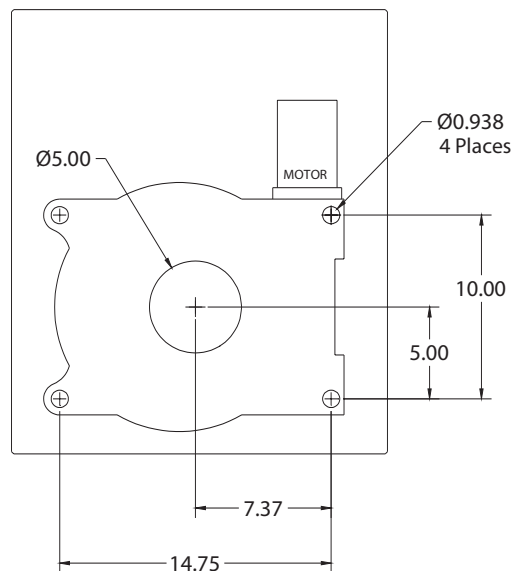
### GEOMETRIC DIMENSIONS



### ROTATIONAL CLEARANCE



### HOLE MOUNTING DETAIL



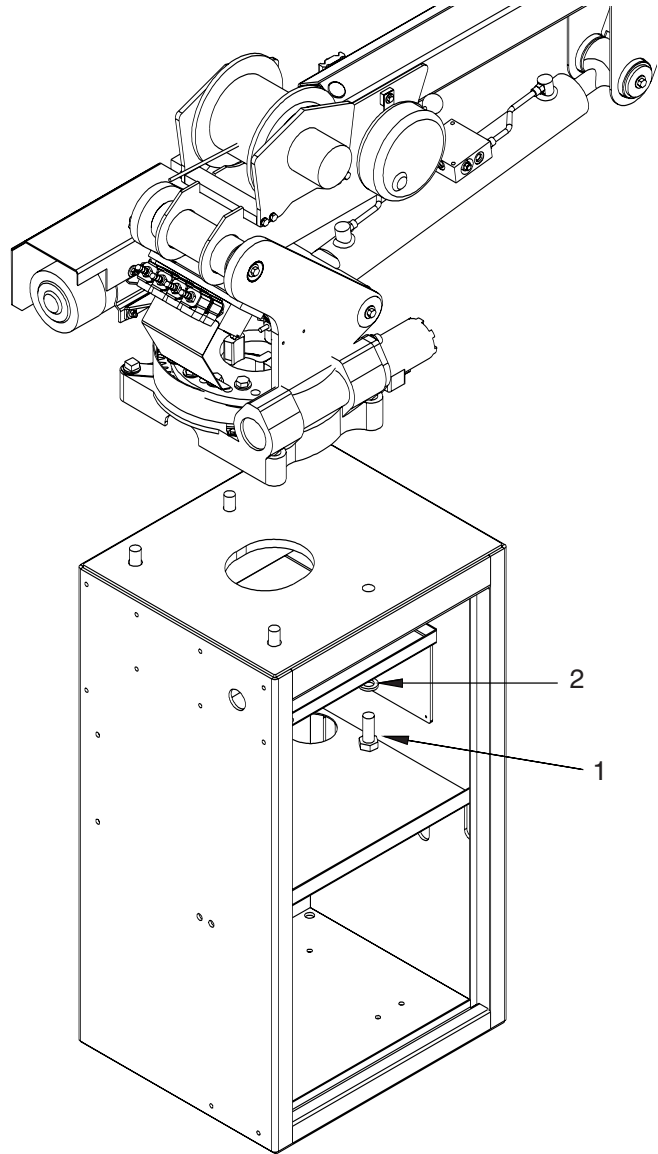
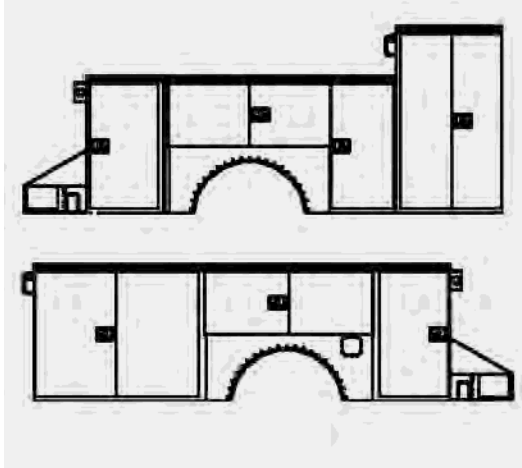
■ Service Bodies

**T1-11 Service Body**

Applicable Chassis: 16000 GVWR to  
19000 GVWR Chassis

Crane Models: 3315  
4420  
5520  
6620  
6628

Cab to Axle: 84" (213.36 cm)  
Body Length Nominal: 133" (337.82 cm)  
Body Height: 44" (111.76 cm)  
Body Width: 94" (238.76 cm)  
Compartment Depth: 22" (55.88 cm)  
Floor Width: 50" (127 cm)  
Net Weight: 3220 lbs (1460.37 kg)



Item	Part	Description	Qty.
1	17688	Cap Scr 0.88-9x2.25 HHGR8	4
2	8648	Washer 0.88 SAE GR8	4

Your local dealer:



*Our People. Our Products.*

190 State Street  
P.O. Box 169  
Garner, IA 50438  
Telephone: (641) 923-3741 • (800) 321-3741  
Fax: (641) 923-2812  
Internet: [www.stellarindustries.com](http://www.stellarindustries.com)  
Email: [sales@stellarindustries.com](mailto:sales@stellarindustries.com)

An Employee Owned Company.  
Copyright © 2008 Stellar Industries, Inc.